

NO. 35/2018

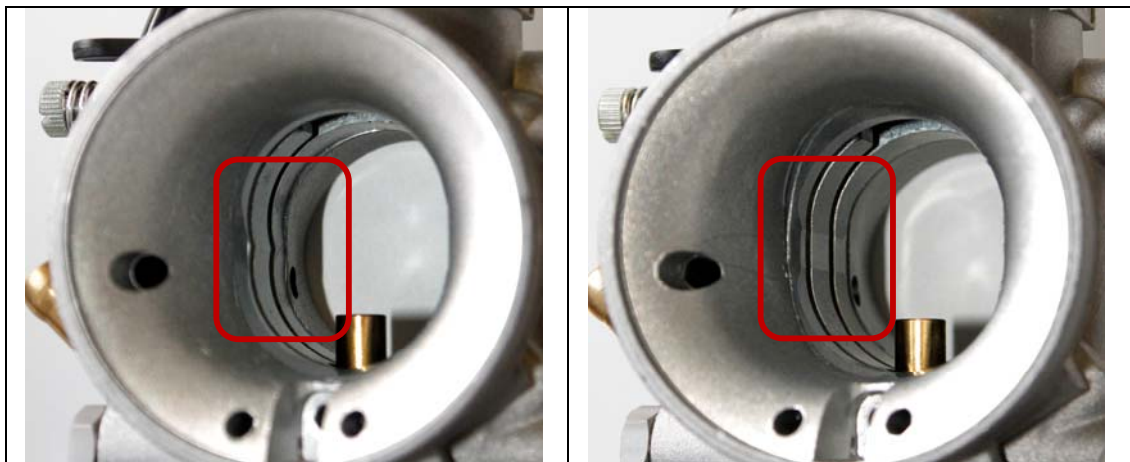
APPEARANCE OF CARBURETOR

October 2nd, 2018

Dear Distributor,

Our steady ambition is to improve product quality and maximize product parity by reducing tolerances. Hence, following activities have been initiated with our carburetor supplier Dell'Orto since beginning of 2018:

- To avoid casting defects in the inlet area the casting tool has been renewed with the same specifications.
- To ease the alignment between the carburetor housing and the carburetor insert in the assembly process, the machining of the insert has been optimized in the marked area. With this, we can also avoid the deburring process and ensure clean parts. This specification does not have any effect on the flow rate as well as on the performance.



left: former carburetor casting; right: carburetor with optimized casting and alignment

Best regards,
BRP-Rotax GmbH & Co KG



i.V. Stefan Gruber i.A.
Manager, BRP-Rotax Karting Business



i.A. Johannes Schönberg
BRP-Rotax Kart Customer Service